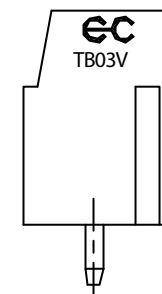
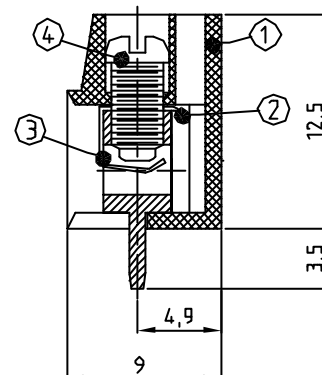
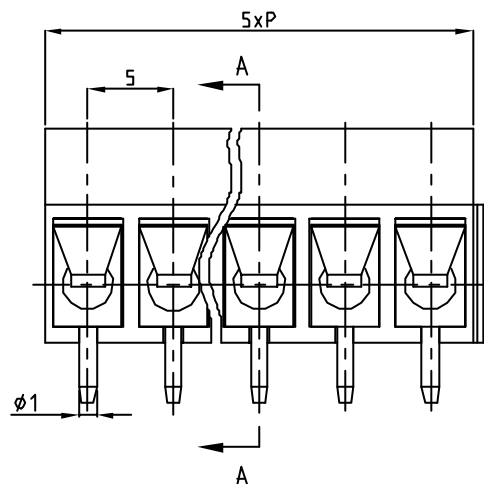
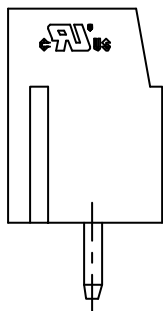


The diagram shows a plan view of a five-bay bridge. It consists of five piers, each with a circular cross-section and a central cross-shaped pier. The piers are arranged in a row, with a central pier and four side piers. The bridge is supported by a central pier and two abutments at the ends. The diagram is divided into five bays by the piers. The piers are labeled with numbers 1 through 5 from left to right. The central pier is labeled 3, and the side piers are labeled 1, 2, 4, and 5. The abutments are labeled 6 and 7. The diagram shows the layout of the piers and the central pier, and the bridge is supported by a central pier and two abutments at the ends.

- 1.Rating:310V 16A;
- 2.Insulation Withstands Voltage:
AC110V/MIN
- 3.Insulation Resistance:
1000MΩ or more at DC511V
- 4.Using Temperature Range:
-40℃--+105℃
- 5.Screw Torque Value:4.4kg-cm
- 6.Suitable Electric Wire:
12-22AWG



CHK.	DATE
------	------



NAME	20.101M
DWG NO.	